

SPECTACULARNWT.COM

NORTHWEST TERRITORIES

FEATURING YELLOWKNIFE

THE AURORA CAPITAL OF THE WORLD

SPECTACULAR
NORTHWEST
TERRITORIES



WHERE ARE WE?



The Northwest Territories is located in Western Canada's arctic region, situated between the Yukon and Nunavut and above British Columbia, Alberta and Saskatchewan.

The Northwest Territories has a population of 44,000 people with 22,000 living in the gateway city and capital of Yellowknife.

Daily direct flights access Yellowknife on Air Canada, WestJet, Canadian North and twice weekly on Air North. All flights are non-stop and two hours in duration from Vancouver, Calgary, and Edmonton.



WHAT ARE THE AURORA SEASONS

There are two Aurora seasons. The first runs from mid-August to early October (late summer to early fall), and the second from late December to early April (winter). Over a 3-night stay during these times, you have a 98% chance of seeing the Aurora, which is higher than anywhere in the world. The reason for Yellowknife being known as the 'Aurora capital of the world' is due to the township's specific location situated underneath the Aurora oval.

AURORA VIEWING IN YELLOWKNIFE

Aurora viewing in Yellowknife ranges from fly-in, fly-out wilderness lodges to unique Yellowknife-based viewing cabins, stations or Indigenous owned heated teepee experiences. Viewing locations are approx 15-30 minutes away from downtown, avoiding the city lights for optimum aurora viewing.

Each operator collects guests from their accommodation to take them out to the viewing experience by private transportation. Guests cannot stay at aurora viewing locations in Yellowknife, all accommodation is situated downtown. The only accommodation linked with Yellowknife aurora viewing is aligned with the fly-in, fly out lodges.

ABOUT YELLOWKNIFE



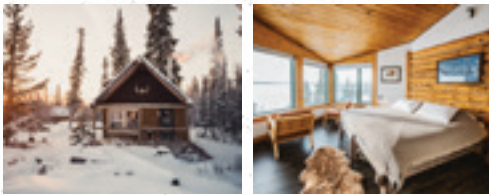
Yellowknife is the gateway to the Northwest Territories and the arctic region of Canada. The township sits on edge of Great Slave Lake, the deepest lake in North America. First-time visitors are often surprised by the amount of amenities and services the capital city has to offer, while being surrounded by nature.

Yellowknife is not a sleepy town, they have running water, electricity, heating, police, a local government, shops, museums, and great restaurants. From local pubs that brew their own beer to local delicacies of fresh fish caught straight from Great Slave Lake. Unique to Yellowknife and what people may not know is that Great Slave lake freezes over in winter creating the famous Ice Roads, as seen on the TV show Ice Road Truckers. These roads take workers to the diamond mines, fueling the local economy. Tours are available to go onto Great Slave Lake for fishing or on the ice roads in winter.

Yellowknife is also an easy to navigate town and relatively flat, allowing visitors options to explore the township on a self walking exploration.

SIGNATURE FLY-IN, FLY-OUT AURORA VIEWING LODGES

Stay overnight under the aurora oval at one of Yellowknife's signature fly-in, fly-out all inclusive lodges. There are no roads here, no light pollution and nobody else around, you're going off the grid in pure wilderness.



 Blachfordlakelodge.com +1 833 247-4758

Blachford Lodge

Features:

- Prince William and Kate the Dutchess stayed at this lodge during their tour of Canada
- Located atop a rolling hill, the main floor serves as the lounge, with bar, dining room and library. The main floor also houses the kitchen, and his and hers showers and washrooms, shared with cabin guests
- An in-house chef is on location serving fresh daily meals
- Winter activities such as snowshoeing, skating, fat tire biking, ice fishing and igloo building are all included
- Summer activities included

are canoeing, kayaking, hiking, swimming

Room types:

- Lodge rooms vary from double, twin, quad and loft
- There are five log guest cabins detached from the main lodge (approximately 5-9 minute walk) to choose from - separated for privacy. Each has its own lake view and outside bonfire pit
- Cabins have propane heating or optional wood fireplace

Bath/Shower Facilities:

- Main Lodge: three lodge rooms have private full ensuite facilities (shower, toilet, sink), and the other three lodge rooms have shared facilities, down the hall just for those rooms only.

- Cabins: all cabins have heated ensuite washrooms with a shower, toilet and sink.

Seasons:

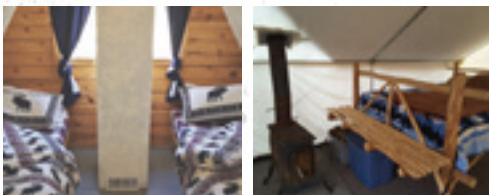
Winter + summer/ autumn

Best suited for: FIT couples, small groups, families

Distance from Yellowknife: 25 minute bush plane flight

Winter clothing: Included in all packages and delivered to a Yellowknife hotel or rooms when you arrive. In autumn clothing rental is not essential but is available if desired

Optional Extras: Snowmobiling is the only additional activity with an added cost. All other activities are included



 Yellowdoglodge.ca +1 403 668 9936

Yellow Dog Lodge

Features:

- Providing a rustic wilderness experience operational for both aurora seasons
- Yellow Dog Lodge is primarily a fishing lodge that also enjoys spectacular aurora viewing
- All meals are provided in all packages
- In winter the lodge includes skiing and snowshoeing equipment and in summer the use of fishing rods and reels

Room types:

- The main lodge room types vary from twin or queen with a maximum of three per room

- There is also a private Executive Cabin which can sleep 6 people.
- Yellow Dog Lodge also features floating tent stays to view the aurora in autumn
- The glamping tents can cater for twin or quad stays with bedding and heating

Bath/Shower Facilities: Cosy cabins cater for four people maximum and showers and toilets are in the main lodge. The Executive cabin has a private shower, bath, sink, and flush toilet in the cabin. Glamping tents have chemical toilets on the floating barge

Seasons:

Winter + summer/ autumn

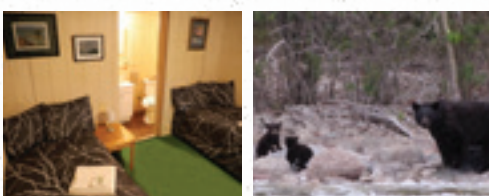
Best suited for: FIT, couples, families and small groups

Distance from Yellowknife: 20 minute bush plane flight from Yellowknife

Winter clothing: Suggested for Mar 1 – Apr 30 winter season and can be added into a reservation when booking. Not essential for Summer/Fall aurora but available for pre-purchase rental in Yellowknife if desired

Optional Extras:

Winter clothing rental



 Nwtfishing.com/lodge-travel +1 867 688 8687

Lac La Martre Lodge

Features:

- Traditionally a fishing lodge, Lac La Martre Lodge is in a unique isolated location perfect for aurora viewing
- 3 or 4 night packages are offered in the months of August and September
- All meals, snacks & non-alcoholic beverages included
- Lac La Martre offers fishing, wildlife viewing boat tours, nature trail walks, bird watching & canoeing

- Given their location it is common to see bears, wolves, and moose, which are usually very rare on mainland

Room types: Accommodation includes heated comfortable cabins

Bath/Shower Facilities:

Full bathrooms and private toilets including showers in cabins

Seasons:

Autumn only

Best suited for: FIT, couples, families and small groups

Distance from Yellowknife: 50 minute bush plane flight

Winter clothing: Not essential for autumn aurora but available for pre-purchase rental in Yellowknife if desired

Optional Extras:

Warm clothing rental

SIGNATURE FLY-IN, FLY-OUT AURORA VIEWING LODGES

Stay overnight under the aurora oval at one of Yellowknife's signature fly-in, fly-out all inclusive lodges. There are no roads here, no light pollution and nobody else around, you're going off the grid in pure wilderness.



Peterson's Point Lake Lodge

Features:

- Primarily a fishing lodge Peterson's Point Lodge is also renowned for stunning barren land photography workshops as well as awe-inspiring aurora
- The service is exceptional with hearty cooked meals provided in the main lodge, which features a kitchen, large dining area, and common lounge
- Daytime activities consist of relaxing and walking trails for photographing the magnificent landscape

Room types: Given it's off the grid location, accommodation is comfortable yet basic with toilets outside of the cabin and in the main lodge. Cabin types range from queen plus single bedding to quad share

Bath/Shower Facilities:

Private toilets located on each cabin wood porch. Showers are in the main lodge

Seasons: Autumn only

Best suited for: FIT, couples, families and small groups.

Distance from Yellowknife: 75 minute bush plane flight

Winter clothing: Not essential for autumn aurora but available for pre-purchase rental in Yellowknife if desired

Optional Extras: Guided fishing (add-on activities are minimum 2 people). Warm clothing rental

 Petersonspointlake.com +1 867 920 4654



Frontier Lodge

Features:

- Rustic wilderness lodge offering unique aurora viewing packages in the summer and autumn months paired with fishing for which the lodge is renowned
- Daily meals are cooked on-site with fresh flown in produce, for those fishing your catch of the day can also be cooked to your liking for lunch or dinner
- Day activities include fishing, hiking boreal landscapes and exploring for local arctic wildlife

- The main lounge offers direct dial telephone via satellite, a lounge area, and licensed bar area
- Packages are 3 nights/4 days with all inclusions

Room Types: Private lakeside cabins feature showers and flush toilets with a variety of sleeping options for 2 to 12 guests

Bath/Shower Facilities:

All lakeside cabins offer private bathrooms with toilet, sink and showers in the cabin

Seasons: Summer/autumn only

Best Suited for: Adventurous travellers FIT and families

Distance form Yellowknife: 50 minute chartered flight included in packages

Winter clothing: Not essential for autumn aurora but available for pre-purchase rental in Yellowknife if desired

Optional Extras: Shore fishing licences

 Frontierfishinglodge.com +1 877 465 6843

YELLOWKNIFE BASED AURORA VIEWING OPTIONS

Cosy cabins, viewing stations, luxury lodges, indigenous teepees located close to Yellowknife to view the spectacular aurora. Each facility does not offer overnight stays, however transfers are included. Choose from full service facilities to small group intimate tours.



Auroravillage.com
+1 867 669 006

Aurora Village

Features:

- Indigenous owned and operated
- 21 heated teepees with heating, chairs, refreshments and tables to relax inside
- 360 degree outdoor heated swivel chairs to view the aurora
- Winter day activities dogsledding, snowmobiling, ice fishing
- Summer activities, hiking, wildlife tours
- Both seasons: city tours

Best suited for: Large groups

Distance from Yellowknife: 20 minutes drive. Hotel transport pick up and drop off included. Pick up times are usually 9pm and drop off 1am

Seasons of operation: Summer/autumn + winter

Winter clothing: Included in all packages and delivered to your hotel prior to your visit to Aurora Village. Clothing will also be picked up from your hotel after you depart by Aurora Village

Optional extras: Winter and summer daytime activities



Northof60adventures.com
+ 1 867 446 6061

North of 60 Aurora Adventures

Features:

- Indigenous family run business
- Cultural tradition
- True north experience
- Aurora viewing in a domed yurt with balcony

Best suited for: Small groups, families and couples

Distance from Yellowknife: 20 minutes drive

Seasons of operation: Summer/autumn + winter

Winter clothing rental: Not included, and must be booked separately through a local supplier such as My Backyard Tours

Optional extras: Dogsledding in winter including kennel tours



Bucketlisttour.com
+1 867 445 8405

Bucket List Tours Cabin

Features:

- Private cozy cabin in a dark location allowing for optimal aurora viewing
- The experience includes a light midnight meal of local fish soup, fresh bannock, tea and coffee, hot chocolate and sweets
- Guests can bring other beverages at leisure.

Best suited for: Small groups no larger than 24 people, average numbers are 10-16 guests. Cabin can be booked out entirely with 14 people or at cost on request.

Distance from Yellowknife: 15 minutes drive. When 8 or more guests book, transport is in a coach (less than 8 guests pick up in an SUV). Pick up times are between 9- 10pm and drop off is 1.30am.

Seasons of operation: Summer/autumn + winter

Winter clothing rental: Not included, and must be booked separately through a local supplier such as My Backyard Tours

Optional extras: City tours of Yellowknife



Northstaradventures.ca
+ 1 867 446 2900

North Star Adventures

Features:

- Located on private land a single indigenous teepee and trappers tent is set up to watch the aurora and hear of indigenous stories under the night sky
- Inside the teepee is a traditional fire burning and seating
- Sample local foods such as buffalo meatballs, local fresh fish from the Great Slave Lake and Indigenous bannock and frybread!

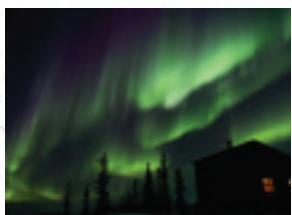
Best suited for: Small FIT couples or small group tours with a maximum of 10 people to ensure an intimate small-group experience

Distance from Yellowknife: Approximately 15-20 minute drive

Seasons of operation: Summer/autumn + winter

Winter clothing: Not included, and must be booked separately through a local supplier such as My Backyard Tours

Optional extras: Guides also offer day activities including city tours of Yellowknife



Aurora Island Lodge

Features:

- A traditional fishing lodge utilised for the bonus of aurora viewing due to its prime location on Great Slave Lake. The rustic facility has basic amenities with exceptional service
- The lodge seats 30 guests very comfortably including a dining room, lounge style seating, large warm wood stove, and an aurora viewing deck
- Guests are served hot beverages, cookies and snacks and are welcome to bring other beverages

Best suited for: Budget conscious travellers, small group tours, family or FIT.

Yellowknifeoutdooradventures.com +1 867 873 5800

Distance from Yellowknife: 45 minutes combining road and Great Slave Lake. Summer travel includes hotel pick up and a boat ride to the lodge. Winter travel includes hotel pick up and a snow tracked van to travel on the frozen ice road of Great Slave Lake to the lodge

Seasons of operation: Summer/autumn + winter

Winter clothing: Not included, and must be booked separately through a local supplier such as My Backyard Tours

Optional extras: Nil

YELLOWKNIFE ACCOMMODATION OPTIONS

A wide variety of accommodation can be aligned with Yellowknife based aurora viewing cabins, teepees and viewing stations. All properties are no further than a 10 minute drive from Yellowknife airport, and most properties offer a pick up and drop off service from the airport. Additionally most properties are centrally located and only a five minute walk to the downtown core.

The Explorer Hotel

- Yellowknife's premium hotel
- All rooms are smoke-free and range from queen, king standard hotel rooms to deluxe equipped with HDTV, microwave, free wi-fi
- The property also features aurora signature suites with elegant living area and kitchenette
- 24/7 room service as well as a lounge and restaurant called Trader's Grill servicing some of the best cuisine in Yellowknife



Explorershotel.ca
+1 867 873 3531

Chateau Nova

- Yellowknife's newest full service, property, with great amenities from a fitness centre, steam room and sauna to the Quarry Restaurant and Lounge
- Room types vary from king, queen to executive king suites or apartment suites
- Rooms include wireless internet, digital tv, free local calls, and complimentary in-room coffee and tea



[Novahotels.ca/
chateau-nova-yellowknife](http://Novahotels.ca/chateau-nova-yellowknife)
+1 866 722 6682

Nova Inn Yellowknife Hotel

- Yellowknife's lead in property for affordable room rates
- Room types range from standard hotels style to spacious suites with kitchens facilities
- The property also features a fitness centre, sauna and a family style restaurant linked to the hotel
- Wifi is also included in all rooms



[Novahotels.ca/
nova-inn-yellowknife](http://Novahotels.ca/nova-inn-yellowknife)
+1 877 839 1236

WINTER CLOTHING

Winter clothing rental is essential in Yellowknife for aurora viewing, and if it is not included in the package you book please look to rent this separately for your clients. They will require jackets, boots, snow pants and gloves. Most suppliers arrange to have winter clothing rental delivered to your clients accommodation prior to checking in. At times in summer warm clothing rental may also be required.

Book winter clothing Rentals

mybackyardtours.com

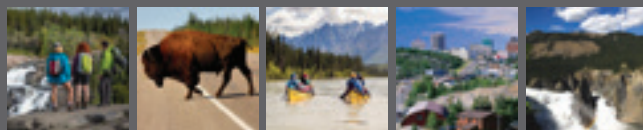
Tel: + 1 867 444 8788

Email: info@mybackyardtours.com

AVERAGE TEMPERATURES

	Month	High / Low
Summer/Autumn	August	20° / 10°
	September	13° / 2°
	October	1° / 0°
Winter	December	-15° / -25°
	January	-20° / -25°
	February	-20° / -25°
	March	-10° / -20°
	April	1° / -10°

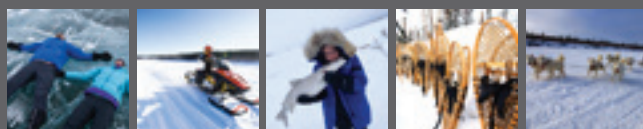
THINGS TO DO IN SUMMER/AUTUMN



During the months of late Summer and early Fall which is Autumn activities include:

- Yellowknife city day tours
- Hiking to Cameron Falls
- A visit to the NWT Diamond Centre to understand the history of diamond mining
- The Prince of Wales Northern Heritage Centre
- Guided tours of the legislative assembly building
- Café scene and brewing companies like NWT Brewing Co.
- If you're staying at a fly-in, fly-out lodge day time activities include guided or self hiking, boat tours, photography, fishing, and wildlife viewing

THINGS TO DO IN WINTER



In the winter months of December through to April day time activities include:

- Dogsledding
- Snowmobiling
- Ice fishing
- Ice road tours
- Ice Cave tours
- Snowshoeing
- Igloo building
- Independent snow castle tours
- Yellowknife city tours
- If you're staying at a fly-in, fly out lodge additional activities will vary per lodge. See fly-in, fly-out lodge pages for details

AURORA VIEWING LODGES



For more information visit us online SPECTACULARNWT.COM

Direct flights to Yellowknife

Vancouver to Yellowknife:
2.5 hours / 1,577 km

Edmonton to Yellowknife:
1.75 hours / 1,023 km

Calgary to Yellowknife:
2.5 hours / 1,268 km

Signature Fly-In, Fly-Out Aurora Viewing Lodges

OVERNIGHT ACCOMMODATION INCLUDED

- 1 **Blachford Lake Lodge** 25-minute flight from Yellowknife
- 2 **Yellow Dog Lodge** 15-minute flight from Yellowknife
- 3 **Lac La Martre Lodge** 50-minute flight from Yellowknife
- 4 **Peterson's Point Lake Lodge** 75-minute flight from Yellowknife
- 5 **Frontier Lodge** 50-minute flight from Yellowknife
- 6 **Trout Rock Lodge** 15-minute flight, 60-minute by Bus/Hagglund from Yellowknife

Yellowknife Aurora Viewing Options

ACCOMMODATION 15-30 MINS AWAY IN DOWNTOWN YELLOWKNIFE

- 7 **Indigenous Aurora Teepee Tour** 30-minute drive from Yellowknife
- 8 **Aurora Village** 30-minute drive from Yellowknife
- 9 **7th Aurora Lodge** 30-minute drive from Yellowknife
- 10 **Bucket List Tours Cabin** 15-minute drive from Yellowknife
- 11 **Aurora Island Lodge** 30-minute with a snow-tracked van from Yellowknife in winter or boat in summer

